

AKARANA WATERFRONT

RANGITOTO & RAYC ROOM LAYOUTS

ROOM LAYOUT OPTOINS



RANGITOTO ROOM

Located on the first floor of the Akarana Marine Sports Centre, the Rangitoto Room is a light-filled and contemporary event space offering views of Rangitoto Island and the Orakei Marina.

Full-height windows allow natural light to flood the room, with sheer curtains available to soften or reduce light as needed while maintaining the stunning outlook.

Designed to feel calm and focused, the Rangitoto Room is ideally suited to meetings, workshops, and small group sessions. The space is fully equipped with in-room audiovisual facilities, including a 75" LED screen with video conferencing capabilities, a built-in sound system, and one handheld microphone, ensuring a seamless experience for both in-person and hybrid meetings.

With its tranquil atmosphere, premium outlook, and flexible layout, the Rangitoto Room provides a professional yet welcoming setting for a wide range of events.



CAPACITY

Cabaret	40
Cocktail	60
Theatre	80
U-Shape	26

DIMENSIONS

75sqm
10m x 6.9m

INCLUSIONS

Chairs	40
Rounds Tables	4
Table Cloths	4
Lounge Suites	2
Bar Leaners	2
Sound System	1
75" LED TV	1
Microphone	2

HOUSEKEEPING

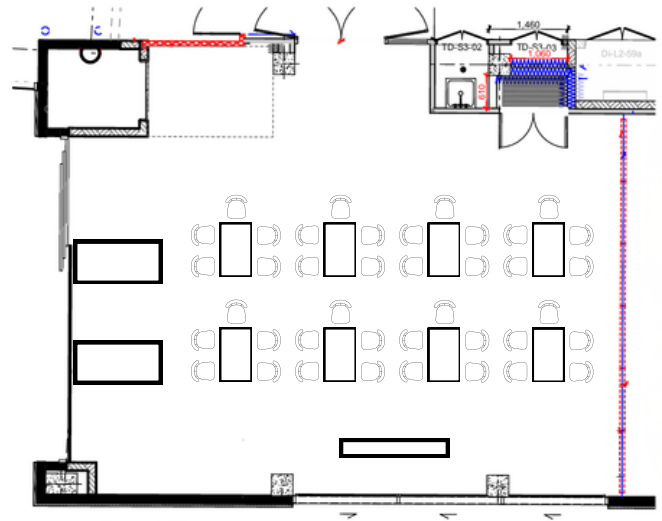
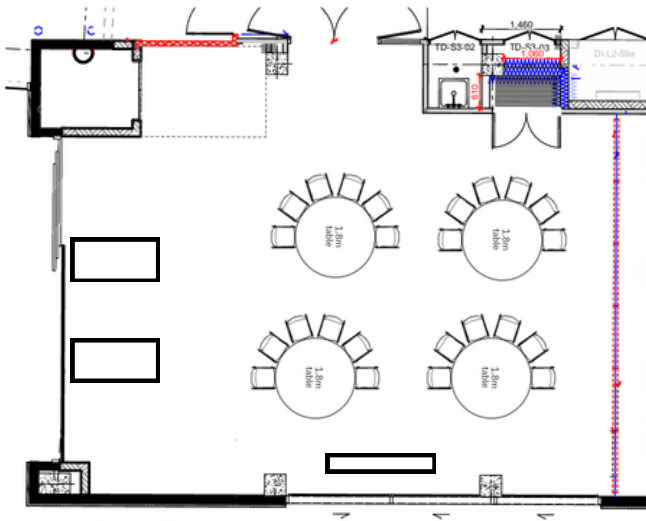
GALLERY

VENUE MAP

PARKING

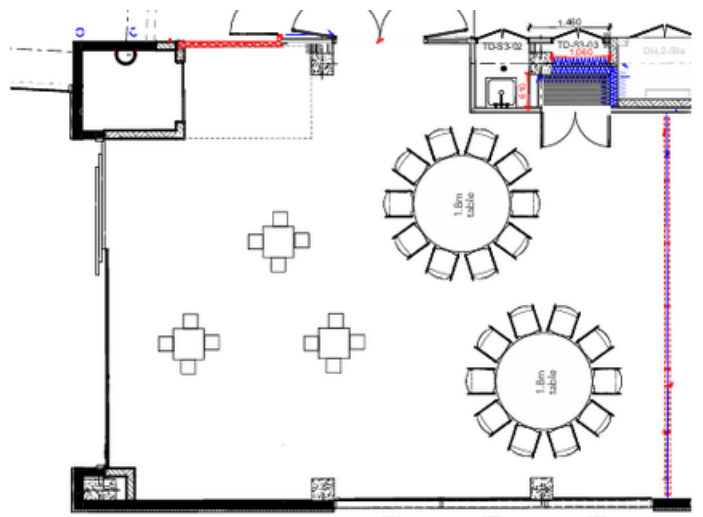
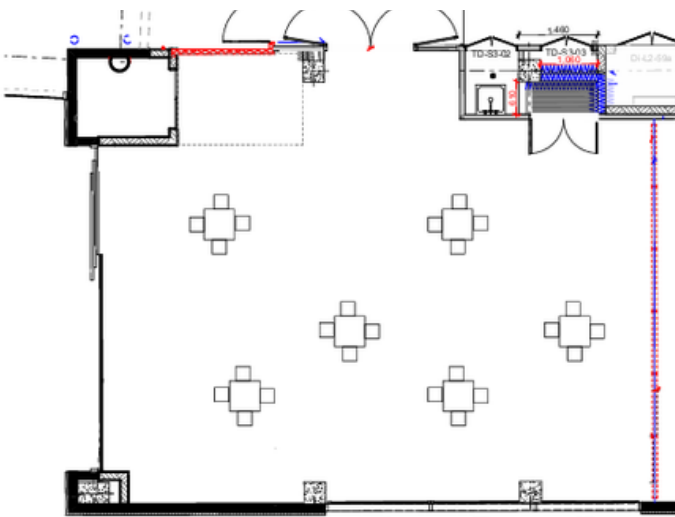
CABARET

CABARET WITH ROUNDS | 24 PAX | WITH RECTANGLES 40 PAX



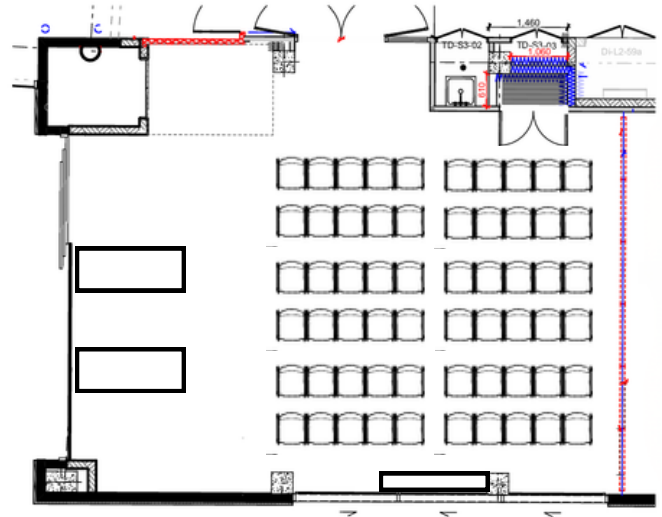
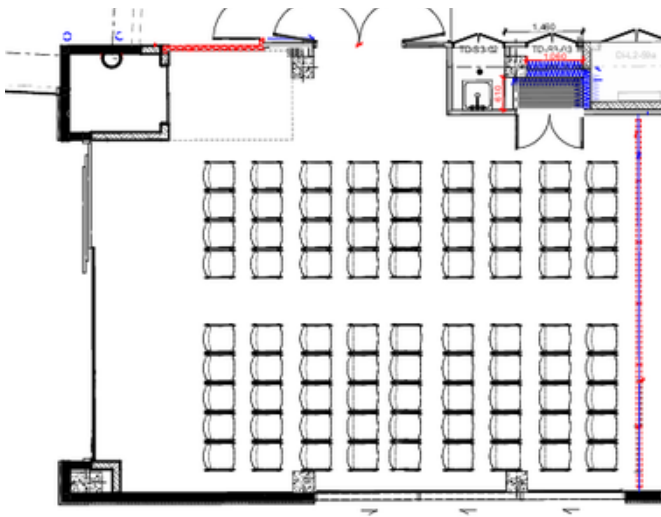
COCKTAIL

MIXED SET UPS | 60 PAX



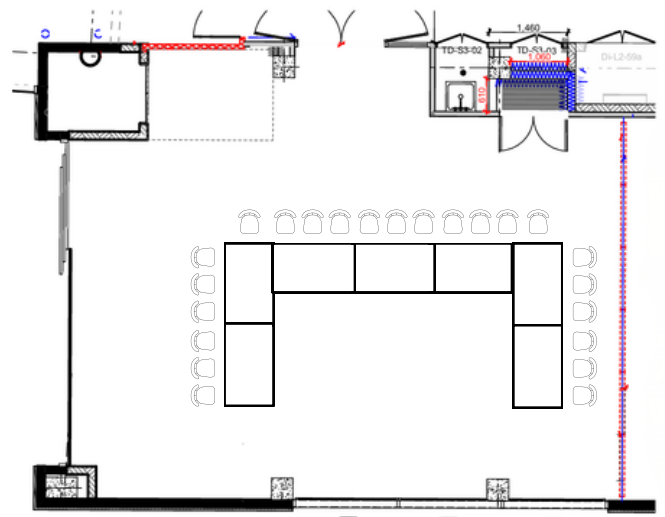
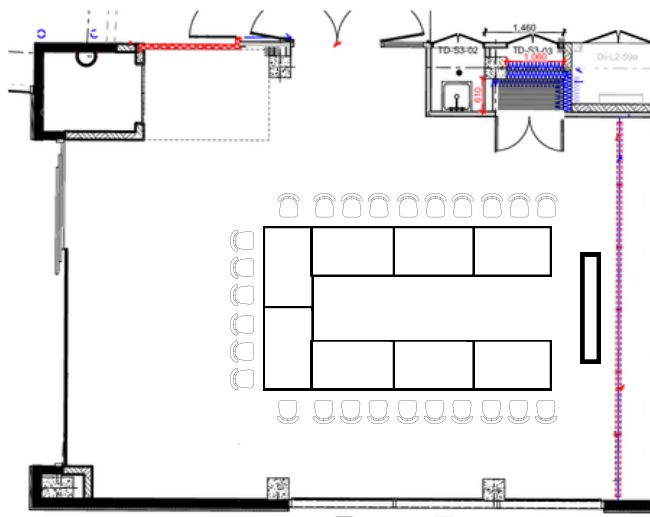
THEATRE

THEATRE | 80 PAX | 60 PAX



U-SHAPE

U-SHAPE 26 PAX | 23 PAX



RAYC LOUNGE

Located on the first floor of the Akarana Marine Sports Centre, the RAYC Lounge is a light-filled and versatile space with elevated views across the harbour toward the Auckland CBD.

Full-height windows allow an abundance of natural light, complemented by sheer curtains that can be drawn to soften or block light as needed while still maintaining the outlook.

The RAYC Lounge offers a relaxed yet refined setting, making it ideal for small meetings, networking gatherings, and informal social events. The space is equipped with in-room audiovisual facilities, including a 75" LED screen, built-in sound system, and a handheld microphone, supporting seamless presentations and speeches.

An in-room bar adds flexibility for hosting, allowing guests to comfortably enjoy the space and its harbour views. With its calm atmosphere, flexible layout, and premium location, the RAYC Lounge provides an inviting setting suitable for a wide range of occasions.

CAPACITY

Banquet	40
Cocktail	80
Theatre	75
U-Shape	20

DIMENSIONS

100sqm
12.6m x 7.8m

INCLUSIONS

Chairs	40
Rounds Tables	4
Table Cloths	4
Lounge Suites	2
Bar Leaners	4
Sound System	1
75" LED TV	1
Microphone	1

HOUSEKEEPING

GALLERY

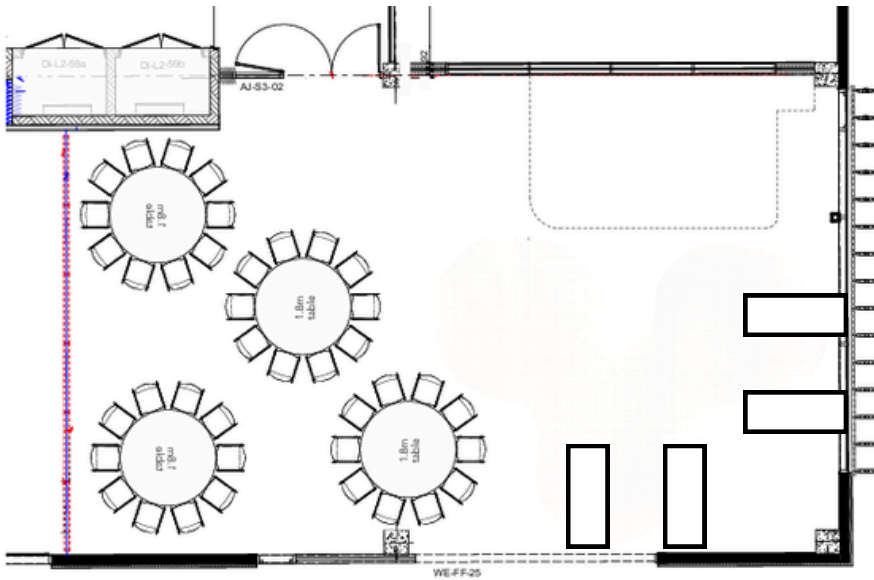
VENUE MAP

PARKING



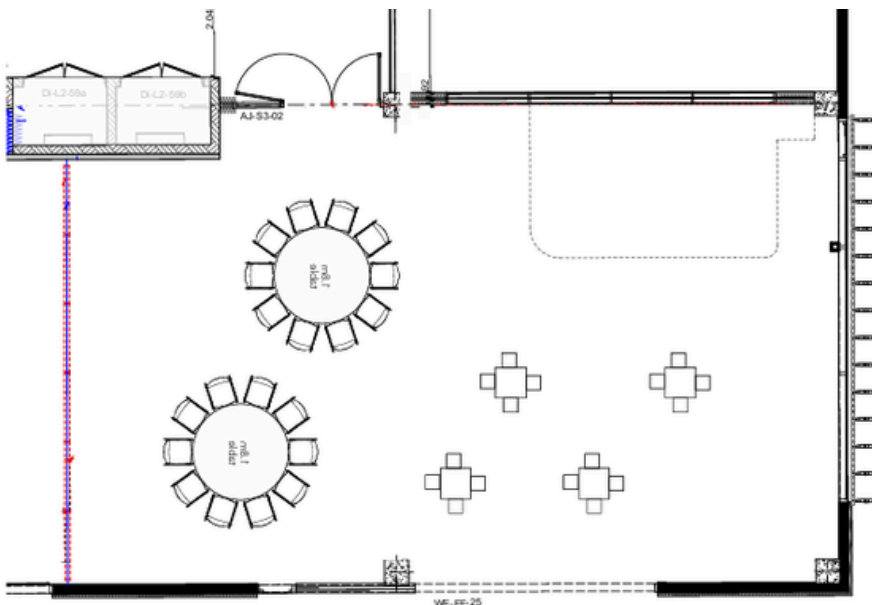
BANQUET

BANQUET ROUNDS 40 PAX



COCKTAIL

COCKTAIL 80 PAX



COMBINED ROOMS

The Combined RAYC Lounge and Rangitoto Rooms offer a versatile and light-filled event space, created by seamlessly sliding the trans-space wall into a concealed cupboard to form one expansive room. Located on the first floor of the Akarana Marine Sports Centre, this combined space enjoys stunning sea views, abundant natural light, and a calm, open atmosphere.

Ideal for events of scale, the combined room can accommodate up to 180 guests standing and up to 150 guests theatre style, with flexible layouts to suit a wide range of functions. The space works beautifully as a standalone venue for parties, dinners, conferences, and smaller services, or as an arrival and pre-function area before guests move into the Te Kawau Room for larger seated events.

Featuring in-room audiovisual capabilities and an in-room bar, the combined space can also be reconfigured for post-event or post-service catering, offering excellent flexibility for event flow. With its premium outlook, generous proportions, and adaptable design, the Combined RAYC Lounge and Rangitoto Rooms provide an elegant and functional setting for memorable events.



CAPACITY

Banquet	80
Cabaret	60
Cocktail	180
Theatre	150

DIMENSIONS

175sqm
23m x 7.8m

INCLUSIONS

Chairs	150
Rounds Tables	6
Table Cloths	6
Lounge Suites	3
Bar Leaners	6
Sound System	1
75" LED Screen	2
Microphones	2

HOUSEKEEPING

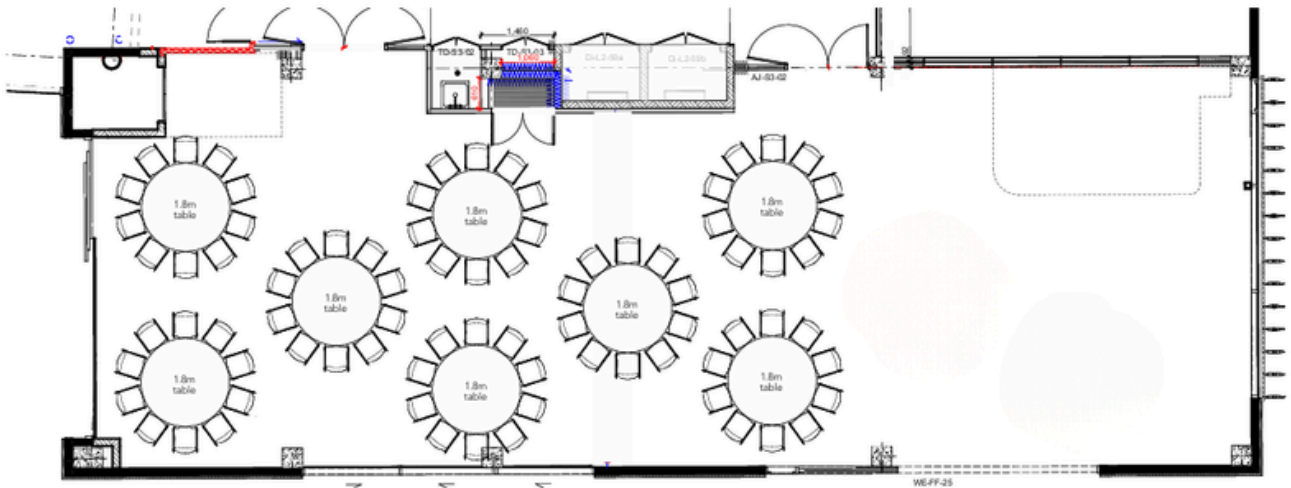
GALLERY

VENUE MAP

PARKING

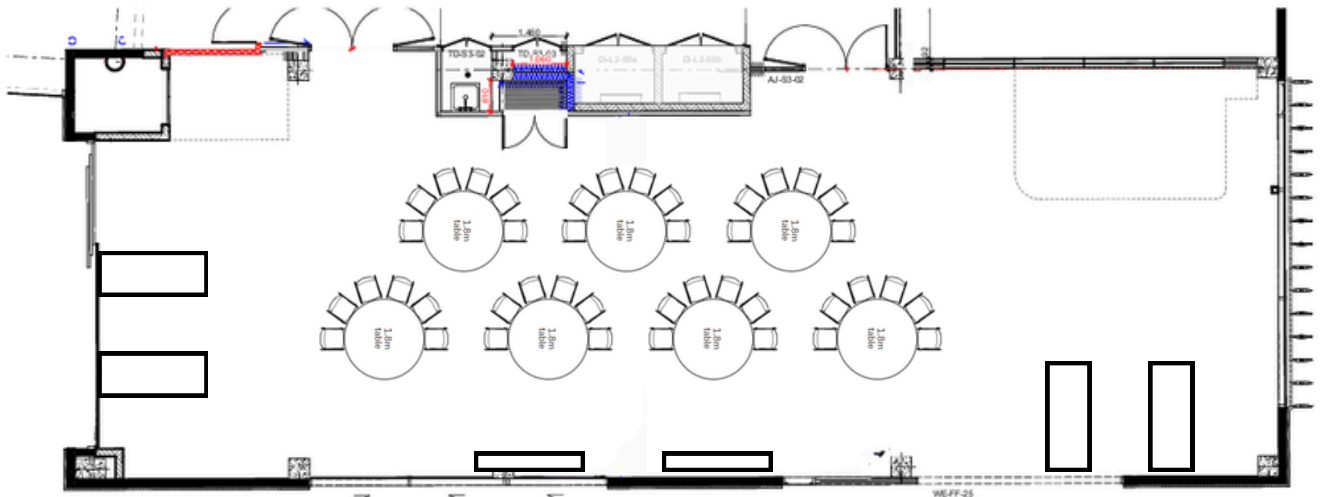
BANQUET

BANQUET ROUNDS WITH BAR AREA | 80 PAX



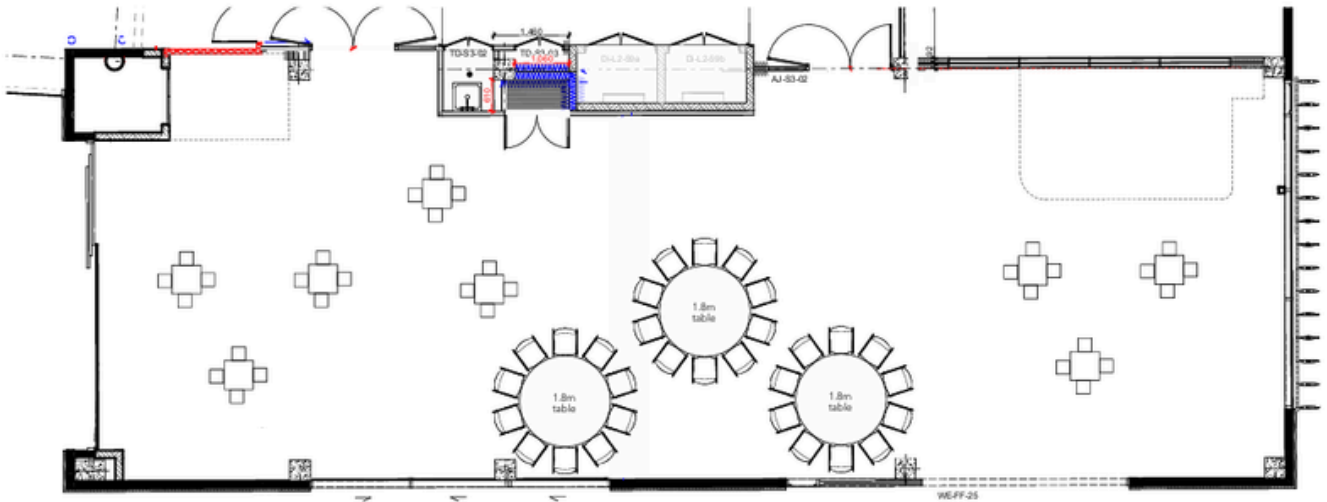
CABARET

CABARET | 42 PAX - 6 PAX PER TABLE



COCKTAIL

COCKTAIL WITH ROUND TABLES | 180 PAX



THEATRE

CABARET | 42 PAX - 6 PAX PER TABLE

